

Multi Channel AHDR series firmware upgrade procedure

WARNING! Upgrading to the latest firmware from AHDR firmware versions 1.095 or earlier necessitate erasing all of the recorded images from the Hard Disk in order for the DVR to support external CDRW operation. Ensure any valuable data is backed up via USB HDD or network prior to upgrade. Erasing all recorded images from Hard Disk is not required if you are upgrading AHDR DVRs loaded with firmware version 1.110 or higher.

Supported Drives

The following external USB CDR-W drives are supported:

- Plextor PX-4824TU series
- Plextor PX-4012TU series
- Yamaha CRW-F1UX series

Note CD-R disks may be used.

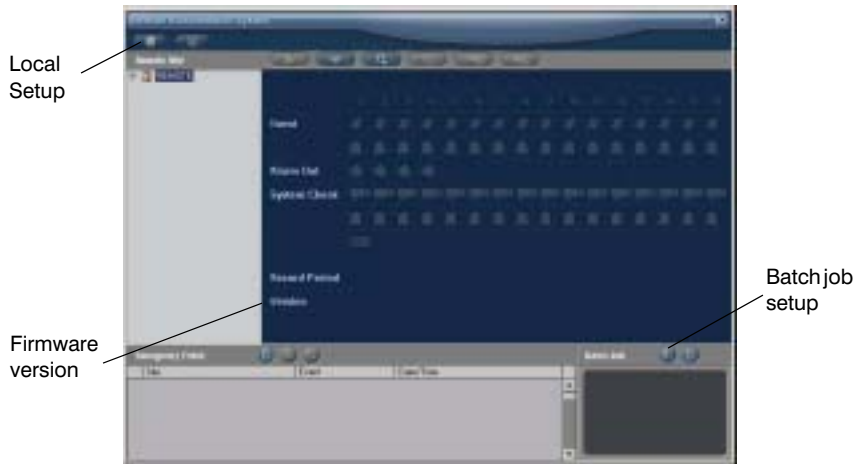
Procedure

1. Setup and configure PC and AHDR unit with either a CAT5 Crossed lead, or connect via a hub.
The default IP address is 192.168.1.129.
2. Take note of the IP address of the unit in the network setup menu to ensure it has not been changed.
3. Confirm the unit will respond to a DOS ping command – for example ping 192.168.1.129.
4. Configure the IRAS software to communicate with the AHDR unit, and run the Batch Job upgrade program to initiate software upgrades.

IRAS Configuration

1. Launch the IRAS Server.
You are presented with the following screen

Figure 1

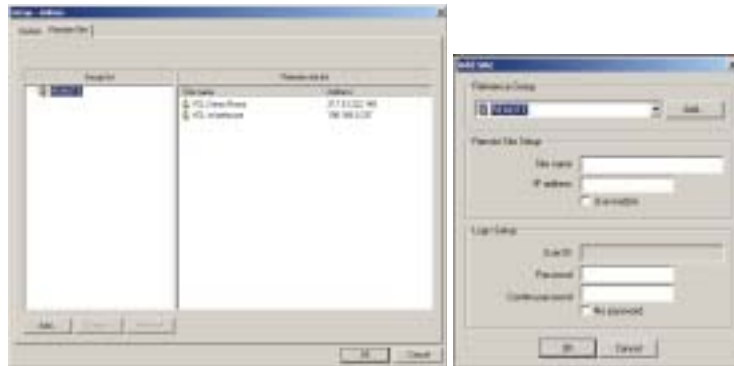


If you already have the remote sites that require upgrading listed after the **REMOTE** tree is expanded, proceed to Software Upgrade Procedure.

Adding Sites

1. Click the **Local Setup** button (Figure 1) to access the **Setup – Admin** menu (Figure 2).
2. Click the **Remote Site** tab and click **Add**.
3. Type in a site name (for example, Default).
4. Type the IP address of the target unit (in this example, 192.168.1.129).
5. Type **administrator** for the User ID. The Default password is **12345678**
6. Click **OK**. Click OK again to return to the main IRAS server screen.

Figure 2

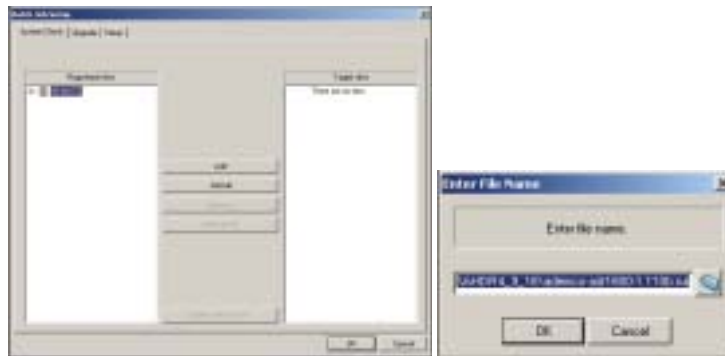


Software Upgrade Procedure

WARNING! Upgrading to the latest firmware from AHDR firmware versions 1.095 or earlier necessitate erasing all of the recorded images from the Hard Disk in order for the DVR to support external CDRW operation. Ensure any valuable data is backed up via USB HDD or network prior to upgrade. Erasing all recorded images from Hard Disk is not required if you are upgrading AHDR DVRs loaded with firmware version 1.110 or higher.

1. Click the **Batch Job Setup** button (*Figure 3*).

Figure 3



2. Expand the remote sites branch and highlight the site you wish to upgrade and click **ADD** (figure 3).
Clicking **ADD** without making a selection will insert all known sites into the Target Sites window.
3. Click the **Upgrade Now** button and enter the path and name of the upgrade file (click the **browse** button if required).

Note 4, 9, and 16-way units have a different firmware file. Double check you are using the correct file.

4. Click **OK** to proceed with the upgrade.
The upgrade will take a few minutes, the bar shows progress (*Figure 4*) and the following screen will be shown if the process is completed successfully (*Figure 5*).

Figure 4



Figure 5

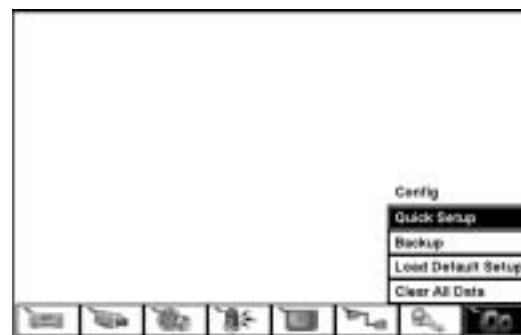


Note The following applies for AHDR DVRs upgrading from firmware version 1.095 and earlier only. Those with firmware version 1.110 may skip this section.

Once the firmware upgrade is complete, it is necessary to clear all recorded data from the hard disks and restart the machine. This is done by selecting the **Clear All Data** option in the AHDR Config menu (Figure 6). The Administrator password is required again to complete the operation.

Once the machine restarts a window will appear prompting you to create a partition for CD-RW support – click **YES**. This provides the buffer area for writing to the CDR-W drive.

Figure 6



This completes the upgrade procedure.